



**34, Barton Road, Eastleigh, SO50 6RN**  
**£250,000**

**SIMILAR PROPERTIES URGENTLY REQUIRED... PLEASE CALL FOR A FREE VALUATION...**

A spacious 3 bedroom mid terrace Victorian house within easy walking distance of the town centre and mainline railway station. The original two reception rooms have been opened up to create a very spacious double aspect family living area some 26'8 in length with a wide baywindow and decor fireplace. All three bedrooms are double size. A sensibly priced, spacious family house with gas central heating & double glazing.

ESTATE AGENTS LETTING AGENTS PROPERTY MANAGEMENT AUCTIONEERS VALUERS PLANNING & DEVELOPMENT CONSULTANTS

David Evans Estate Agents is the trading name of David Evans Estate Agents Ltd. Registered Office: 4 High Street, Eastleigh, SO50 5LA Registered in England No. 3484796 VAT No. 704 5882 29



These particulars, whilst believed to be accurate are a general outline only and do not constitute any part of an offer or contract. Intending purchasers should not rely on them as statements or representations of fact, but must satisfy themselves by inspection or otherwise as to their accuracy. No person in the firms employment has the authority to make or give any representation or warranty in respect of the property or any appliances or services at the property.



The property is accessed via a upvc door with obscure glazed panel onto

### Front Garden

The front garden is enclosed by brick wall to the side boundary. A ramp access.

### Entrance Hallway

Smooth plastered ceiling, two ceiling light points, dado rail, single panel radiator, laminate floor covering.

Staircase leading to the first floor landing.

High level electric consumer unit / fuse board mounted to high level.

### Dining Room 11'11" x 8'7" (3.64 x 2.63)

Smooth plastered ceiling, ceiling light point, upvc double glazed window to the rear aspect, single panel radiator, provision of power points.

From here a wide archway leads through to the lounge.



### Lounge 14'3" x 10'10" (4.36 x 3.32)

Smooth plastered ceiling, ceiling light point, walk in bay window, single panel radiator, provision of power points.

The room centres on an electric coal effect fire with marble effect heart, backing with a wooden 'Adam' style mantle over.



### Kitchen 15'0" x 7'10" (4.58 x 2.40)

The kitchen is fitted with a range of low level cupboard and drawer base units, heat resistant worksurface with a range of matching wall mounted cupboards over. Inset stainless steel sink unit with drainer and a mono bloc mixer tap over. Electric hob with chimney style extractor hood over. Double electric oven, slimline 'Beko' dishwasher, space and plumbing for an automatic washing machine. Space for an integrated fridge / freezer

Smooth plastered ceiling, two upvc double glazed windows to the side aspect, linoleum floor covering and a single panel radiator.

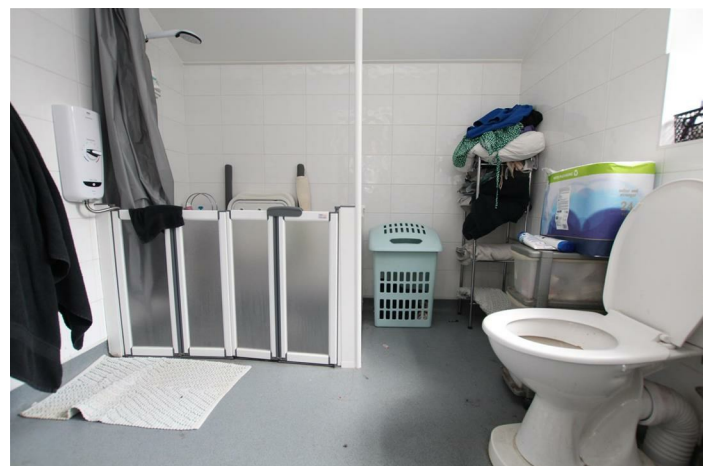


### Rear Lobby

Smooth plastered ceiling, ceiling light point, upvc obscure double glazed door giving access onto the rear garden. A sliding pocket door leads to a wet room.

### Wet Room 7'8" x 7'8" (2.35 x 2.35)

Smooth plastered skilling ceiling, ceiling light point, obscure upvc double glazed window to the side aspect, single panel radiator. Wall mounted wash hand basin, wet room style flooring, close coupled wc. Myra advanced electric shower.



### Rear Garden

To the side of the property is an area laid to concrete.

The rear garden is principally laid to lawn, enclosed by timber panel fencing.



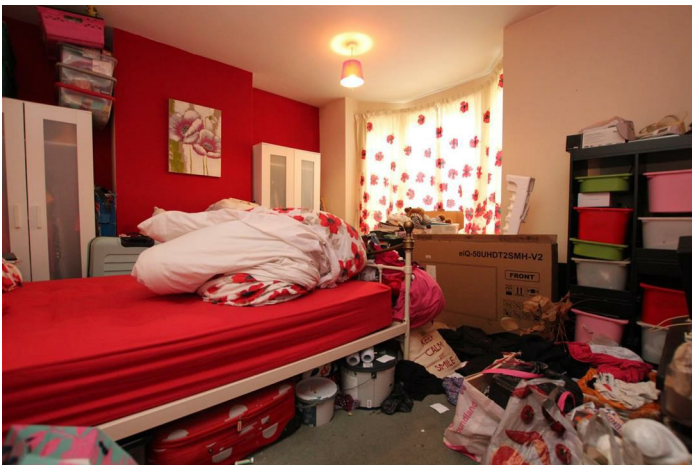


### First Floor

The landing is accessed by a straight flight staircase from the entrance hallway. With a smooth plastered ceiling, ceiling light point.

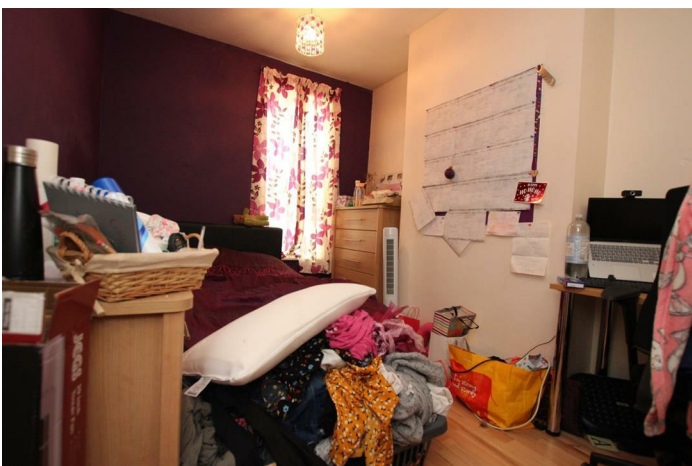
### Bedroom 1 14'2" x 11'9" (4.33 x 3.60)

Smooth plastered ceiling, ceiling light point, walk in upvc double glazed bay window, double panel radiator.



### Bedroom 2 12'0" x 8'7" (3.68 x 2.63)

Smooth plastered ceiling, ceiling light point, upvc double glazed window to the rear aspect, single panel radiator, laminate floor covering, provision of power points.



### Bedroom 3 15'0" x 7'7" (4.58 x 2.33)

Smooth plastered ceiling, ceiling light point, two upvc double glazed windows to the side aspect, single panel radiator, provision of power points.



### Council Tax Band B

